

Bullivants

G100 Eye Type Grab Hook

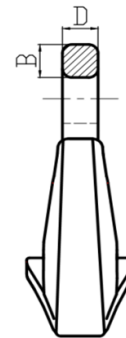
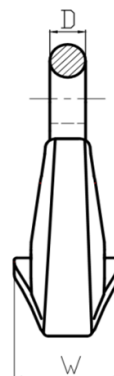
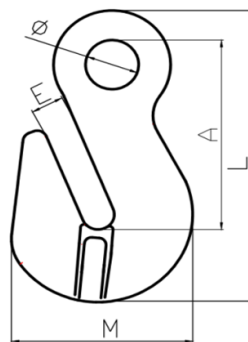


Main Features:

- Eye type for use with connecting link
- No reduction in WLL due to supporting lugs
- 25% Stronger than Grade 80 equivalent
- 100% Magnaflux detection
- Individually tested to 2 x WLL
- Fatigue tested for 20,000 cycles
- Complies with AS 3776:2015

ZERO HARM Product Features:

- Grade 100 makes the process lighter and reduces the risk of potential manual handling injuries
- Hi Visibility Colour contrast connecting points



Specifications:

Bullivant's Mfr No.	WLL t	A mm	E mm	M mm	L mm	Ø mm	D mm	W mm	B mm	Weight kg
WGRH-060-BVE-G100	1.4	46.0 (± 3.0)	8.0 (± 1.0)	46.5 (± 2.0)	73.0 (± 3.0)	13.5 (± 1.0)	8.0 (± 0.5)	25.5 (± 1.5)	8.0 (± 0.5)	0.15
WGRH-080-BVE-G100	2.5	61.0 (± 3.0)	11.0 (± 1.0)	53.0 (± 2.0)	93.0 (± 3.0)	17.5 (± 1.0)	10.5 (± 0.5)	33.5 (± 1.5)	10.5 (± 0.5)	0.30
WGRH-100-BVE-G100	4.0	85.0 (± 3.0)	13.5 (± 1.5)	74.0 (± 2.0)	129.0 (± 3.0)	22.0 (± 1.5)	14.0 (± 1.0)	42.0 (± 2.0)	14.0 (± 1.0)	0.79
WGRH-130-BVE-G100	6.7	104.0 (± 4.0)	17.0 (± 1.5)	96.0 (± 3.0)	166.0 (± 4.0)	27.0 (± 1.5)	18.5 (± 1.0)	53.5 (± 2.0)	15.5 (± 1.0)	1.67
WGRH-160-BVE-G100	10.0	119.0 (± 4.0)	19.0 (± 1.5)	116.0 (± 3.0)	186.0 (± 4.0)	36.0 (± 2.0)	22.0 (± 1.0)	74.0 (± 2.5)	19.0 (± 1.0)	2.74